

# Supplementary evidence: Public Health representation – The Metropole Licence Variation

## Alcohol Related Harm: Bridges Ward

Figure 1: Alcohol related ambulance call outs

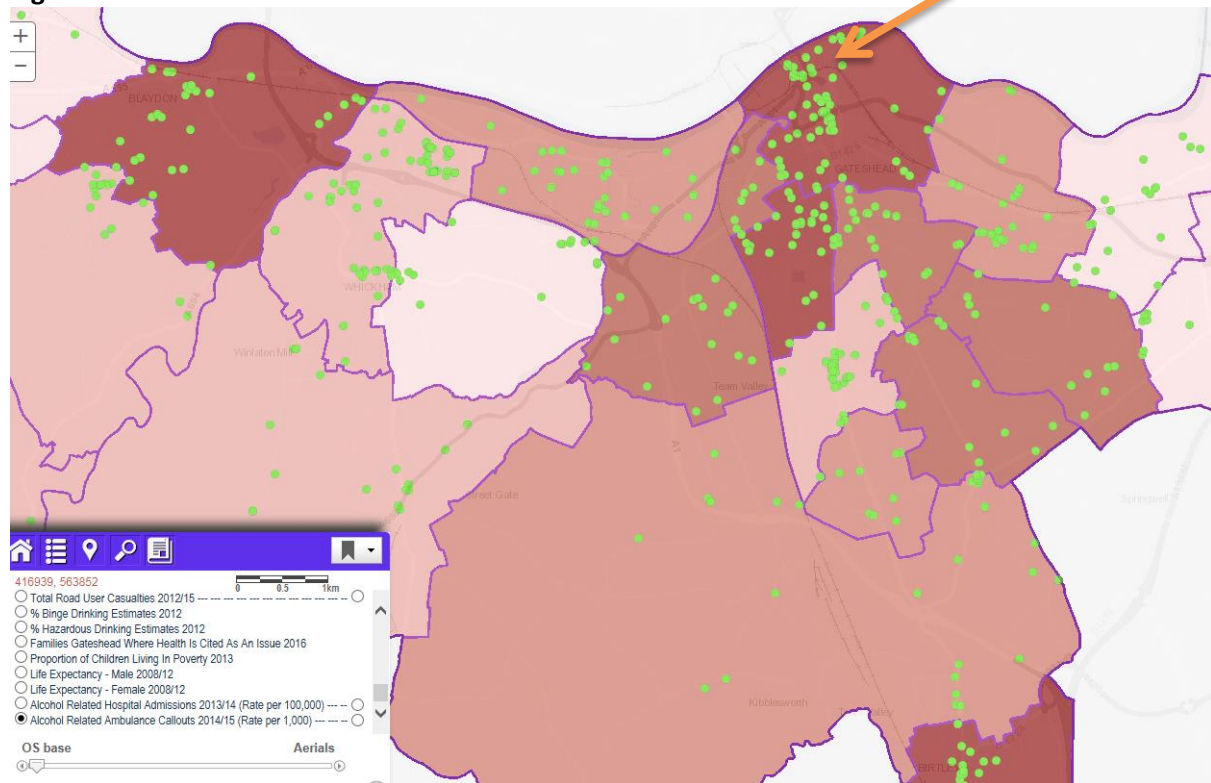


Figure 2: Alcohol related crime (per 1,000)

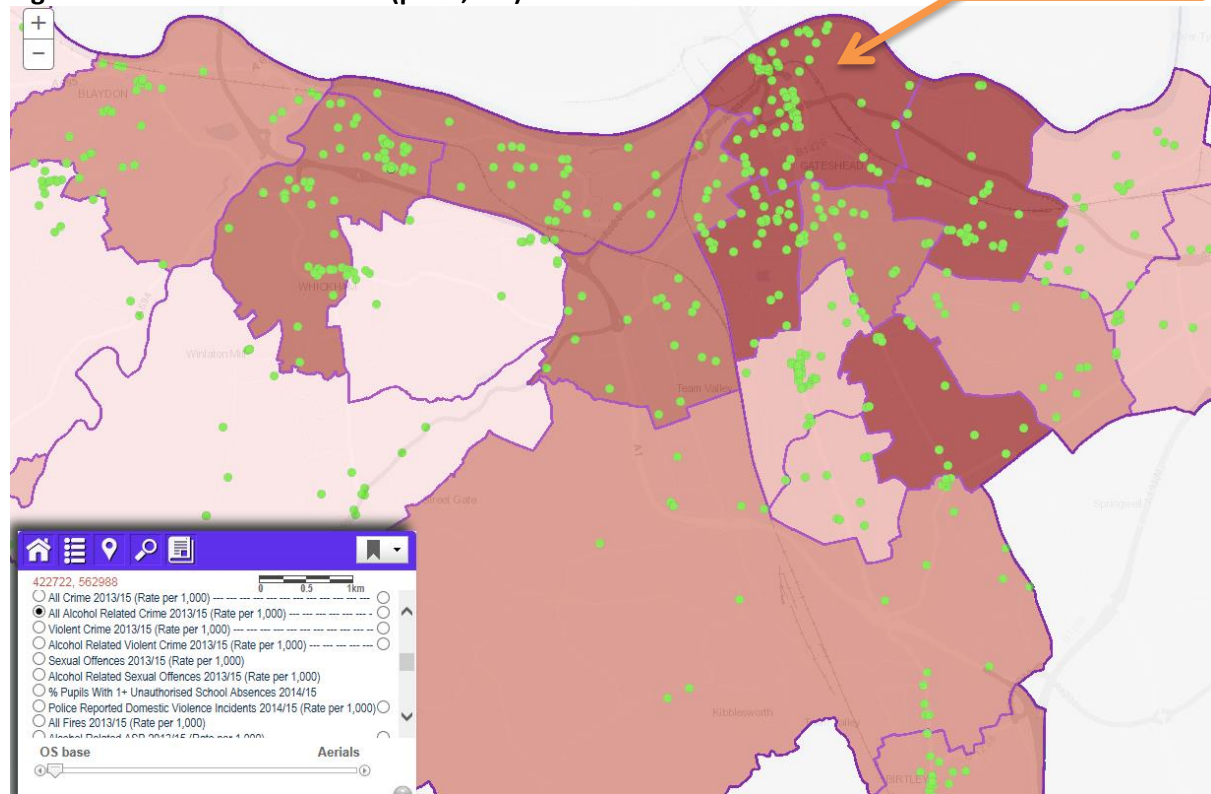


Figure 3: Alcohol related violent crime (rate per 1,000)

Bridges Ward

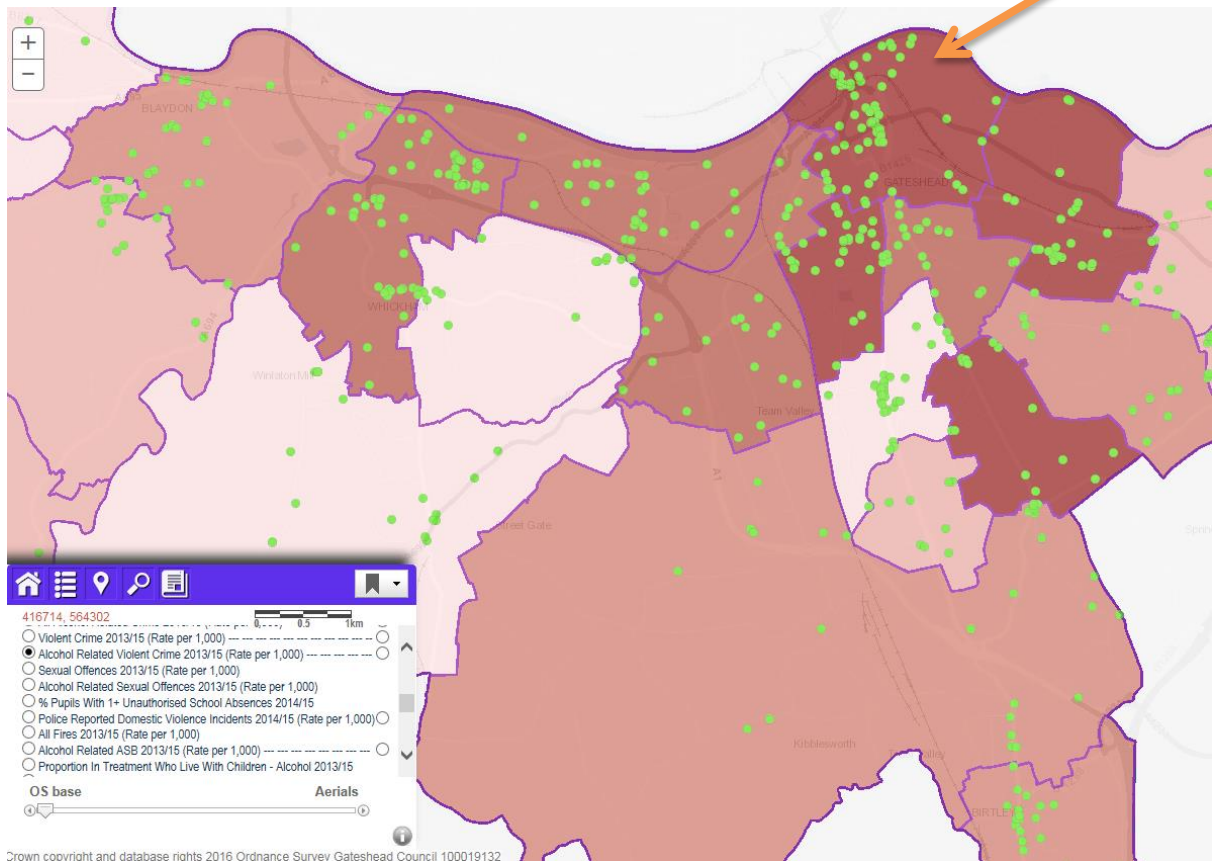
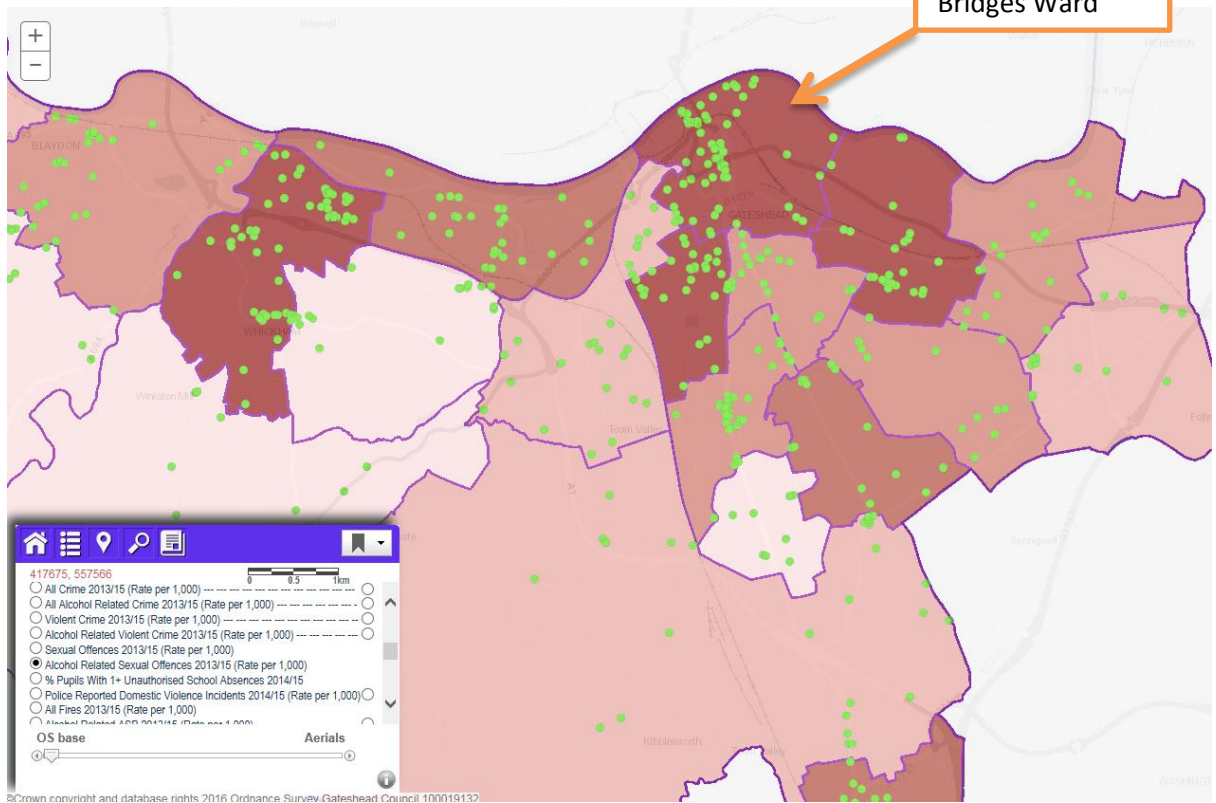


Figure 4: Alcohol related sexual offences (per 1,000)

Bridges Ward



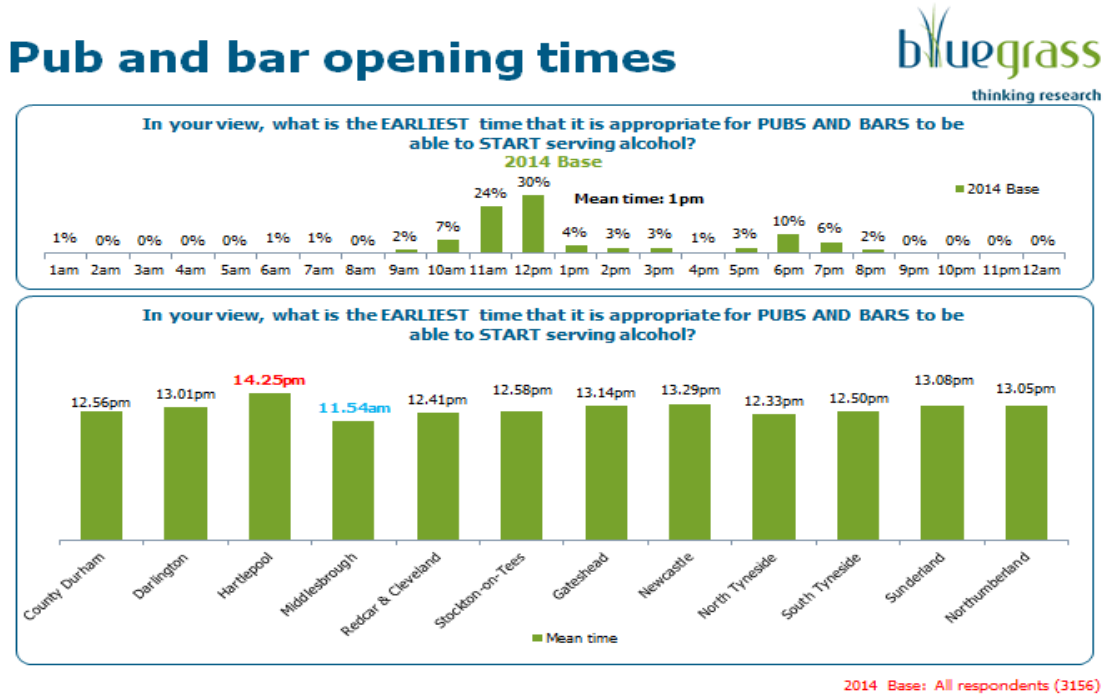
**Figure 5: Admission episodes for alcoholic liver disease (PHE, LAPE, 2010-2017)**

9.05 - Admission episodes for alcoholic liver disease condition (Broad)		Directly Standardised rate per 100,000							Ranks (LAs ranked out of 326, 1=highest rate, 326=lowest rate)						
Area Code	Area Name	2008/09	2009/10	2010/11	2011/12	2012/13	2013/14	2014/15	2008/09	2009/10	2010/11	2011/12	2012/13	2013/14	2014/15
<b>All People (all ages)</b>															
E06000047	County Durham	116.4	124.4	134.9	137.0	139.6	124.3	126.9	47	45	46	44	41	80	76
E06000005	Darlington	68.4	63.3	88.8	107.8	125.3	113.2	98.6	164	206	134	95	58	97	146
E08000037	Gateshead	195.9	189.1	210.5	201.7	173.3	171.8	179.3	2	6	6	9	18	22	23

**Figure 6: Claimants of benefits due to alcoholism**

11.01 - Claimants of benefits due to alcoholism			
Area Code	Area Name	Directly Standardised rate per 100,000 2015	Ranks (LAs ranked out of 326, 1=highest rate, 326=lowest rate) 2015
<b>All People 16-64 yrs (Males), 16-61 yrs (Females)</b>			
E06000047	County Durham	188.7	53
E06000005	Darlington	189.8	51
E08000037	Gateshead	250.0	24
E06000001	Hartlepool	178.0	64
E06000002	Middlesbrough	253.7	20
E08000021	Newcastle upon Tyne	257.2	18
E08000022	North Tyneside	192.7	47
E06000057	Northumberland	151.2	91
E06000003	Redcar and Cleveland	150.9	92
E08000023	South Tyneside	251.6	23
E06000004	Stockton-on-Tees	183.6	62
E08000024	Sunderland	231.4	28

**Figure 7: Public Perceptions Survey, (Balance 2015)**



**Statement 1: Balance's Annual Public Perceptions Survey 2014** (Approx - 3000 Respondent of which 1048 from Gateshead)

When asked the question:-

**'In your view what is the EARLIEST time that it is appropriate for PUBS and BARS to be able to start serving alcohol?'**, the group answered:

**9am to 10am - 3% support**

**Statement 2: Gateshead Evolve Drug and Alcohol Treatment and Recovery Provider**

In the month of March Gateshead Evolve engaged with the following:

601 alcohol only service users in the past 12 months with 37 new presentations in March alone

151 alcohol and non-opiate service users in the past 12 months with 7 new presentations in March alone.

We currently offer appointments from 09:00 Monday – Friday as we find offering earlier appointment for alcohol users is beneficial given likely hood of withdrawal symptoms for alcohol dependant service users.

Verbal feedback from service users would indicate that having public houses in the vicinity is a potential trigger for use and can jeopardise recovery. Further extended opening hours is likely to exacerbate this.

Given the focus currently from public health in relation to liver disease and the direct impact alcohol sales have on this as a service we would not support extended opening hours which will only encourage earlier alcohol consumption.

There is anti-social behaviour currently in the centre of Gateshead with police orders in place in an attempt to combat this – again extended opening hours may have an impact. Feedback from both service users and staff is the feeling of being intimidated by the crowds outside the Metropole.

Please do not hesitate to contact me should you require any further information.

Regards

**Jazz Chamley**

**Service Manager**

**Gateshead Evolve**

47 Jackson Street

Gateshead

NE81EE

Tel: 0191 594 7821

07795800472

Fax: 0191 247 5844

[jazz.chamley@cgl.org.uk](mailto:jazz.chamley@cgl.org.uk)

Web: [changegrowlive.org](http://changegrowlive.org)

